

In This Issue...

- PRESIDENT'S MESSAGE .. 2
- UPCOMING EVENTS..... 3
- WHO'S NEW?..... 4
- MMC WISHLIST..... 5
- GET YOUR GROOVE ON .. 6

Did You Know?

The Coffee and Gift Shop will be receiving new Valentine, Easter and other spring merchandise in the next few weeks. Be sure to stop in and see what they have to offer!

Also, love your job? Tell HR why for a chance to win \$100! The 2012 Wisconsin Health Care Employee Pride program is now accepting up to 300 word essays, poems or stories about why you chose a career serving others. One winner will be chosen from MMC. To participate, drop your submission off in HR by March 9.



Partners Supports MMC with \$56,000 Donation

Through hard work, dedication and a lot of baking, Partners was pleased to present MMC with a check for \$56,000 during the winter Partners of MMC Open Meeting. The money represents the hospital volunteers' profits from 2011 and is used to purchase hospital equipment and artwork, along with providing medical scholarships. Over the years, Partners has donated \$1,285,810 to MMC. Presenting this year's check to MMC President and CEO Dan Hymans is current Partners President Carol Evans. See the complete list of what's being funded on page 5.



Left: The meeting also included the 2012 Installation of Officers. From left to right: Jan Washneski, Secretary; Betty Harnish, President-elect; Carol Evans, President; and Mary Hymans, Treasurer.

President's Message

Dear Employees:

February should prove to be a challenging month for MMC. While no one planned it this way, after experiencing some delays with the opening of the new areas on second floor and in OB, and with the introduction of the new EMR, both are now expected to come on-line in the next few weeks.

The state inspectors are expected to make their final survey of the new addition this Thursday, February 2. If sufficient work has been completed to allow for occupancy, I expect staff will begin to immediately prepare the areas to receive patients. It is then likely patients will begin to move into the areas during the week of February 6. While the exact time line has not yet been established, you will hear more about these plans as they are developed later in the week.

If the move cannot be completed next week, it will probably have to wait until later in the month as the big change the week of February 13 will be the conversion to the new EMR. I know many of you have now completed the training for this system and are ready to go. I have also been pleased with the number of physicians who have taken the time to be trained in this new system. My thanks to all of you for the extra effort you have given to make this conversion a success.

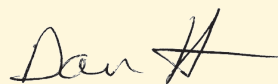
As you may be aware, we made the decision to simultaneously convert to the new EMR at both MMC and HAMH. We did that, however, only with the agreement that QuadraMed, the company supplying the new EMR, would have full conversion crews onsite at each of the two hospitals. They agreed to do so. There will be 37 folks from QuadraMed available to the two facilities during this conversion process. In addition, all of the super-users on MMC's and HAMH's staffs will be released from their normal duties that week so they can assist with the conversion process. During the first several days, this

staff will be assigned to different shifts throughout the day so that someone will be in-house in both facilities 24 hours per day. We also plan to have additional staff in-house through that first weekend to insure someone is available to assist staff who often only work those shifts.

A considerable amount of planning has gone into the preparation for this conversion process. While we know there will be frustrating moments, I am confident that by the end of the week of February 13, most of you will be adapting to the new EMR and will begin to realize some of the benefits of the new record. This is a major step forward for both MMC and HAMH and one that I am pleased to be taking at this time. It will make MMC a better hospital.

By the time we get to the end of the month, MMC could be a very different place. We will be taking care of patients in new areas using a new EMR. It should prove to be an exciting time for all of us and proof that MMC continues to strive to stay abreast of developments within the hospital industry. MMC continues to be a good community hospital. The reason we can all say that is because we continue to adapt to the many changes occurring in our industry. So keep up the good work – you can be proud of what you will accomplish this month and for many years to come.

Til next time,



Dan Hymans



Thank You

(The following letter was sent to Administration regarding a patient's encounter with Memorial Medical Center)
Please let me express my gratitude and appreciation for the treatment I received at the MMC Emergency Room on November 25, 2011.

The entire staff treated me with courtesy and careful attention throughout the visit. Most of all I would like to express my thanks to Dr. Candy Vorderbrug.

With my diminished hearing further compromised by the symptoms I was experiencing, communication was especially difficult for me that night. Dr. Vorderbrug made particular effort to overcome these obstacles. She allayed my anxiety effectively and explained all treatment options patiently and clearly, making it possible for my wife and I to understand the situation and make our decisions with a high degree of confidence. I cannot over-emphasize how great a help this was in getting through an unfamiliar and unsettling experience.

Bob Mackreth, Washburn

Upcoming Events

FEBRUARY

Introduction to Yoga

February 1, 8, 15

4:30 - 5:30 pm

Twin Islands

\$7 per class. No need to pre-register. Bring mat if able.

Massage Therapist

February 2, 16

11 am - 1 pm

Physical Therapy

\$15 for 15 minutes. Call ext. 5482 to make an appointment.

Heat Wave in February: What you need to know to cope with menopause

February 7

6:30 pm

WITC - Ashland

Conference Center

Free. Featured speakers: Jann Penn, CNP and Howard Sandin, MD Essentialia Health - Ashland
Sponsored by: Bay Area Health Education Coalition.

All About Legumes

February 9

5 - 5:45 pm

Twin Islands

Free. Learn about cooking dried beans and their nutritional value, the cost benefit and decreasing the gas factor. Legume recipes will be provided. Free and open to all employees and MMC Partners. Call ext. 5462 or email thoyles@ashlandmmc.com to RSVP.

2012 Daffodil Sale

Order due by February 10

Place daffodil orders dedicated to Relay For Life Team MMC with Cindy Blodgett, ext. 5510 or any other Team MMC Member.

50,000 Steps

February 12 - March 17

Track your steps for a chance to win great prizes! Watch your pay stubs or call Ext. 5463 for more information.

Valentine's Day Bake Sale

February 13

8:30 am

Stockton Island

Proceeds benefit Relay for Life Team MMC.

Just for Women

March 7

5:30 - 7:30 pm

Northern Great Lakes Visitors Center

Free. MMC staff will be on hand to answer your health questions followed by Northland's NewsCenter Anchor Michelle Lee sharing her weight loss journey. Open to the public. Appetizers will be served.

Sherry Lipske Raffle

March 22, 2 pm

Cafeteria

Raffle winners announced. All proceeds benefit the Sherry Lipske Fund. Additional details on page 5.

Long-Time MMC Partner Passes Away

Harriet A. Tenpas, age 86, of Washburn, passed away on Jan. 1, 2012, at Northern Lights Health Care Center in Washburn. She was born June 11, 1925, in Ashland to Minnie (Hoshovd) and Emil Johnson.

Harriet graduated from Ashland High School in 1943 and attended the Marvelle School of Beauty in Milwaukee. After spending a short time in California she moved back to Ashland where she worked at the Beauty Nook. On Dec. 30, 1950, she married Garit H. Tenpas at Nidaros Lutheran Church in Ashland. Except for the 10 years she and Garit spent in Marshfield, she has spent her entire life in "God's Country" as she put it.

Harriet was a stay at home mom for the majority of her marriage. She loved to cook, sew, knit and crochet. She and her husband Garit loved to square dance. Following retirement she worked at the ABC Thrift Store in Washburn and dearly loved her Monday and Thursday ladies. She was also an active volunteer with Memorial Medical Center and Northern Lights Care Center. She was a member of Grace Bible Fellowship in Washburn, where she was active in Sunday morning fellowship and Ladies Bible studies. Her church was her lifeline after losing her husband in 2008.

Harriet is survived by three daughters, and one daughter-in-law. She is also survived by 10 grandchildren and five great grandchildren.

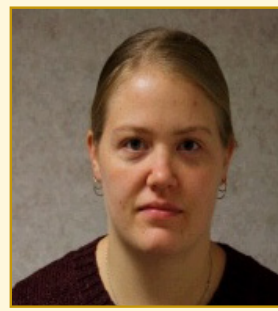
Who's New?



BROOKE BROLEY
Radiology



JOHN STEIN
Radiology



AMY KOSTAC
Patient Access Services



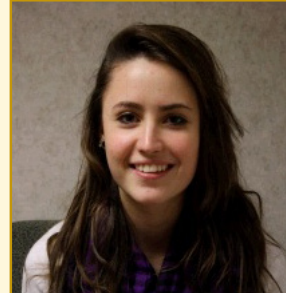
NEAL J. SCHROETER, MD
Emergency Room



TAMMIE JONAS, RN
Emergency Room



KIM DUFEK
Patient Access Services



MARILYN ALEXANDER
Nutrition Services



GAIL MURPHY, RN
Behavioral Health Unit

MMC Wishlist

Items to be purchased off the MMC Wishlist in 2012 thanks to the support of Partners of MMC include:

\$8,000 in scholarships awarded to students pursuing higher education in medicine

\$3,000 towards artwork for the new Patient Care Unit

\$5,200 for large, high-definition monitors in two trauma rooms for viewing digital radiology images without leaving the patient's side

\$7,500 for a ceiling mounted patient lift in the CT room to assist with patient transfers

\$2,200 for digital HD camcorder and software in Rehab Services for gait analysis

\$7,000 for a V-force vibration system for the treatment of peripheral neuropathies which will promote natural healing of nerve problems

\$2,500 in outdoor furniture for the enclosed patio at Behavioral Health to provide inpatients a respite from what can be a stressful experience

\$2,100 for a modular countertop for the chemistry section in the Laboratory which will provide space for small bench top analyzers in the Core Lab improving efficiency, workflow and ergonomics

\$2,500 in landscaping in front of new building addition

\$16,000 to purchase new lifeline phone units and to update used equipment

Thanks for the Memories!



Donna Kurensky, Environmental Services retires after more than 32-years of service. Above: Les Whiteaker thanks her for her commitment to MMC while Chuck Skoraczewski, Environmental Services (right) reminisces over the incredible work Donna did in her 30+ years at MMC.

Sherry Lipske Fund Raffle

MMC Employees once again have an opportunity to get involved in the annual Sherry Lipske Fund Raffle. All proceeds benefit the Sherry Lipske Fund which provides financial support for MMC employees facing difficult times. In 2011, the fund distributed nearly \$3,000.

To get involved, consider a donation. Employees have until February 16 to donate an item or service for the raffle. For more information, contact Cindy Blodgett at Ext. 5510. Second, support the raffle by purchasing plenty of tickets. Tickets and descriptions of the donations will be distributed through your paycheck. Then check out prizes March 16 - March 22 and drop your tickets off with the items you want to win. Winners will be announced on March 22 in the Cafeteria at 2 pm.

Open Enrollment

MMC will hold an open enrollment for the dental plan through Delta Dental. If you haven't enrolled prior to this, or if you would like to add a dependent to your dental insurance, Human Resources will be accepting applications for enrollment through March 9, 2012. The effective date will be April 1, 2012.

Enrollment forms are available in the Human Resources office. If you have any questions regarding the open enrollment, please call Human Resources at ext. 5520.

The Pulse

A publication of Memorial Medical Center

1615 Maple Lane Ashland, WI 54806

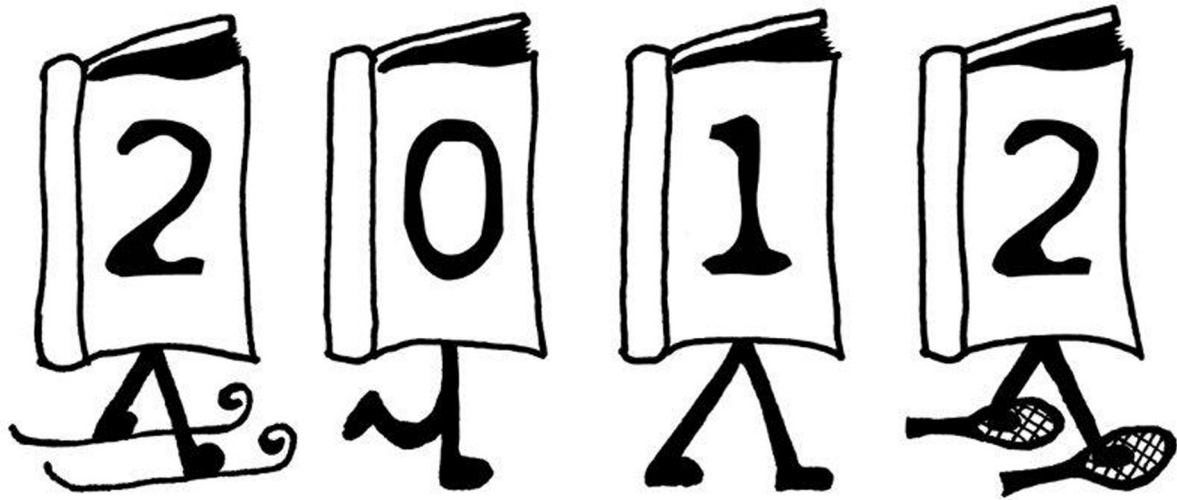
Beth Probst, Public Relations Specialist

Kevin Stranberg, Public Relations Director

715.685.5181

Get Your Groove On!

Book Across The Bay



Participants of Book Across the Bay will be awarded shirts sporting this fun logo, designed by Natalie Jokinen. The 15-year old is the daughter of Jaime Zar, Nursing. Natalie's design was chosen out of numerous entries. Congrats on her design and good luck to all BATB participants!

Got Photos? Submit them anytime!

We'd love to highlight the photos you're proud of and feature more of the folks who make things happen at MMC and in the community! Send us tips about what folks are up to in your department or share your best photo of your kids, grandchildren, weddings, parties, races, sports or nature shots! Drop-off photos in the PR Office, or Email your pictures and ideas to bprobst@ashlandmmc.com.

Congratulations to Chad Lipske, HR for choosing the winning name of our newsletter!